



# Mapped in Bangladesh (MiB)

**ENHANCING  
SUPPLY CHAIN VISIBILITY  
OF BANGLADESH'S  
APPAREL INDUSTRY**





## What is MiB?

By providing credible, timely and granular data on export-oriented ready-made garment (RMG) factories in Bangladesh, Mapped in Bangladesh (MiB) works to

- ▶ Support ESG, compliance and reporting efforts
- ▶ Facilitate business leads for manufacturers
- ▶ Facilitate multi-stakeholder dialogues
- ▶ Provide greater supply chain visibility
- ▶ Progress advocacy works
- ▶ Provide data on environmental credentials



# Key Features



Comprehensive supply chain repository of Bangladesh's RMG industry

Objective, credible, independently-sourced primary data updated through physical survey



Open-source database and actionable information to support diverse stakeholders

Improves supply chain visibility and supports risk mitigation



Presenting ESG data of BGMEA, BKMEA member factories including non-members

Supports sourcing strategy and decision-making



Available in Bangla and English to reach diverse users

Regularly updating selected data by utilizing crowdsourcing approach



# MiB Data Points



GPS Location



Contact Information



Products



Memberships



Certifications



Production Capacity



Major Brands



Export Countries



Establishment Year



Nearby Fire Station



Nearby Medical Center



Nearby Police Station



Solar Panel



ETP



Environmental Certifications



Platform Affiliations



Separate Washroom



Menstrual Hygiene



Childcare Facility



Healthcare Facility



Maternity Leave Facility



Dining Space



Anti-harassment Committee



Safety Committee



Participation Committee



Insurance Policy

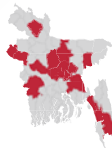
# MiB in Numbers

## THE SUPPLY CHAIN



**3800+**

Export-oriented RMG Factories



Operating in

**20**

Districts



Works for

**3400+**

Brands / Buyers



Export to

**88**

Countries

## MEMBERSHIP STATUS



**2224**

BGMEA Member Factories



**818**

BKMEA Member Factories



**1095**

Non-Member Factories

\*273 factories have both BGMEA and BKMEA memberships

## FACTORY TYPE



**1659**

Knit  
Garment



**1098**

Woven  
Garment



**707**

Sweater



**420**

Knit/Woven  
Garment

## WORKER RATIO



**57%**

Female



**43%**

Male

## GLOBAL INTERACTION



**110K+**

MiB users so far



From

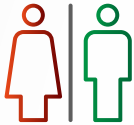
**189**

Countries

Source: MiB  
As of September 2023

# MiB Facts

We conducted a nation-wide census of 3800+ RMG factories and found:



**77%**  
have gender-specific  
washrooms



**70%**  
provide maternity leave



**57%**  
have anti-harassment  
committees



**57%**  
have child care  
centers



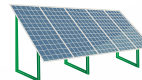
**49%**  
have in-house  
health-care facilities



**48%**  
have insurance  
for workers



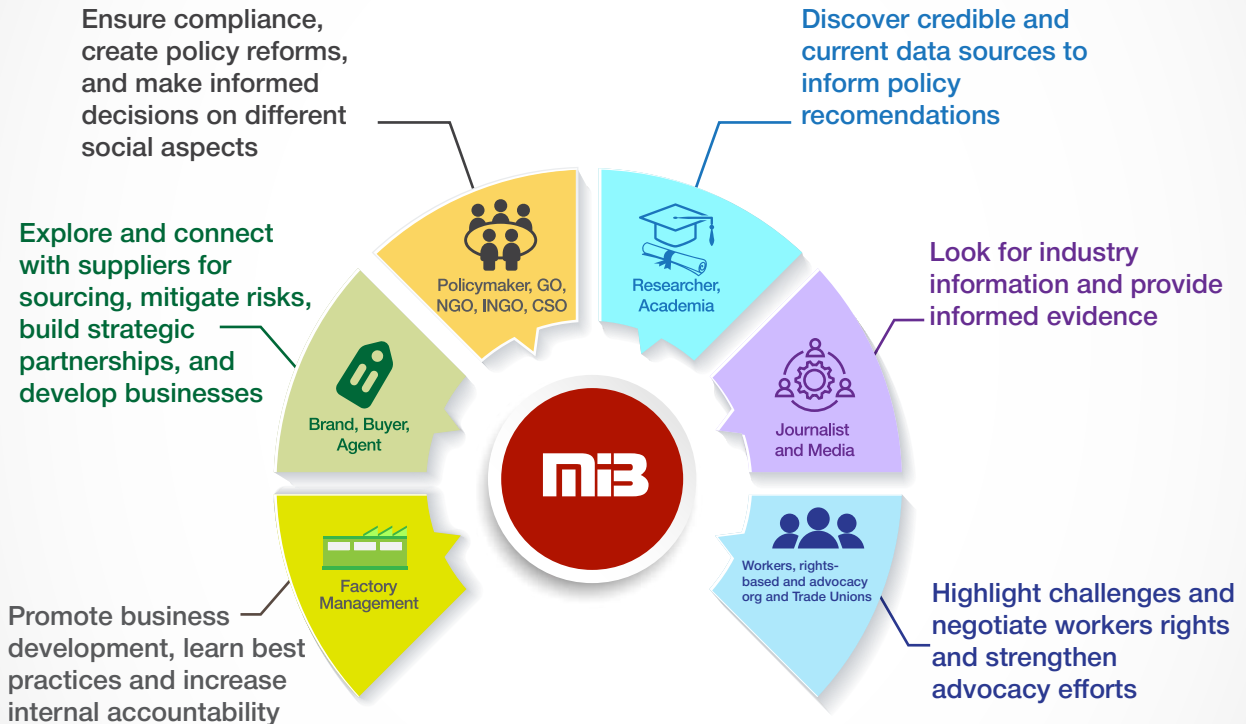
**25%**  
provide menstrual  
hygiene products



**24%**  
use solar panels  
in Dhaka (Sep 2023)

Source: Mapped in Bangladesh (2021)

# Benefits for Stakeholders





# MiB's Notable Users

GO / NGO / INGO



**USAID**  
FROM THE AMERICAN PEOPLE



Deutsche Gesellschaft  
für Internationale  
Zusammenarbeit (GIZ) GmbH



**THE WORLD BANK**  
IBRD - IDA | WORLD BANK GROUP



**icddr,b**



ACADEMIC



Cornell University



**Duke**  
UNIVERSITY



UNIVERSITY OF OREGON



UNIVERSITY OF MINNESOTA



UNIVERSITY OF ABERDEEN



Bangladesh  
University of  
Engineering and  
Technology (BUET)



COPENHAGEN  
BUSINESS SCHOOL  
HANDELSHØJSKOLEN



LA TROBE  
UNIVERSITY



CSO / RBO



Business & Human Rights  
Resource Centre



Ethical  
Trading  
Initiative

For workers' rights.  
For better business.



wikirate



Clean  
Clothes  
Campaign



নারীপক্ষ



BRAND / BUYER



AMERICAN EAGLE  
OUTFITTERS



LACOSTE

JCPenney

MEDIA



THOMSON REUTERS  
FOUNDATION



SOURCING  
JOURNAL



THE INTERLINE

# MiB Advisory Board



Mr Miran Ali  
BGMEA



Mr Fazlee Shamim Ehsan  
BKMEA



Mr Nur M Amin Rasel  
BGMEA



Ms Naureen Chowdhury  
Laudes Foundation



Dr Carla Dohmwirth  
GIZ



Mr Paul Roeland  
Clean Clothes Campaign



Ms Delphine Williot  
Fashion Revolution



Dr Khondaker Golam Moazzem  
CPD



Mr Abu-Syed Belal  
EU Delegation



Mr Babul Akhter  
BGWIF



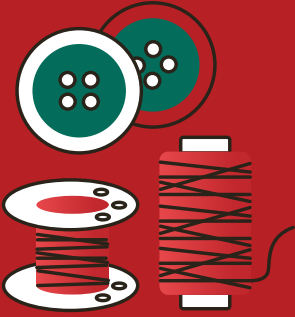
Professor Matin Saad Abdullah  
MiB, BRAC University



Ms Afshana Choudhury  
MiB, BRAC University

---

**MiB** introduces the **Project Advisory Committee (PAC)** for providing valuable inputs and significant insights to the team throughout the project period.





**MappedinBangladesh.org**

**Mapped in Bangladesh (MiB)**

Centre for Entrepreneurship Development (CED), BRAC University

Cell: **+88 01997 339988** | Email: **mappedinbangladesh@bracu.ac.bd**

Web: <https://ced.bracu.ac.bd/> | [www.mappedinbangladesh.org](http://www.mappedinbangladesh.org)



/rmgdrfmb



/drfmb



/mib